

# Antigua 29

Domainehomes



## Where the living is easy

The Antigua is the perfect antidote for a busy lifestyle, with comfortable spaces that allow you to enjoy the simple pleasures in life. The master bedroom welcomes the light, so you can lay in bed and enjoy the warmth of the morning sun. The kids will enjoy the wide-open spaces surrounding the kitchen, where they can play indoors or head outside to the secluded alfresco area. An additional living area at the front of the home is perfect for a formal lounge, while the upstairs rumpus can contain the often messy world of the kids and their games. It's a home that helps you embrace a slower, simpler, happier lifestyle.



13 64 69 or [Domainehomes.com.au](https://www.domainehomes.com.au)

# Antigua 29

Domainehomes

Fits Lots

12.5 m+

4

2.5

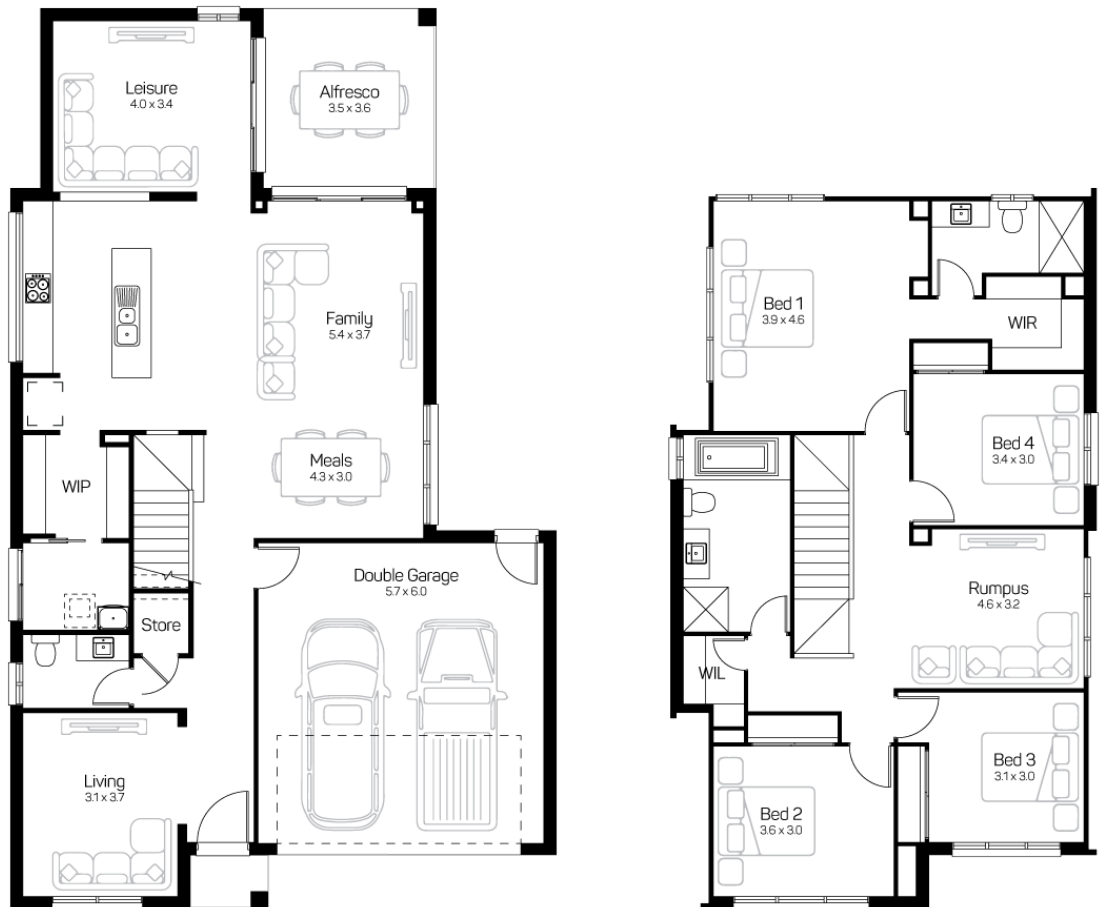
2

Width & Length

10.90 x 17.99m

Total Area

272.50m<sup>2</sup> / 29.33sq



13 64 69 or [Domainehomes.com.au](http://Domainehomes.com.au)

\*Facades are a style and are for illustrative purposes only and are not house specific. They may demonstrate optional enhancements such as Colorbond roof, rendering and feature brickwork/tiles that are not standard but are available as an optional upgrade. Each facade may look slightly different from one house type to another and not all facades are available on every home. Items such as landscaping, water features and decking are not supplied by Clarendon Homes. Ask your New Home Consultant for full details on standard inclusions on the home and facade you have chosen. Standard facade pricing is based on face brick (and cladding to double storey homes) with roof tiles unless otherwise specified. E&OE. Clarendon Homes (Qld) Pty Ltd ABN 37 078 853 022 Licence Number 80444.

# Antigua 29

Domainehomes

Fits Lots

12.5 m+

4

2.5

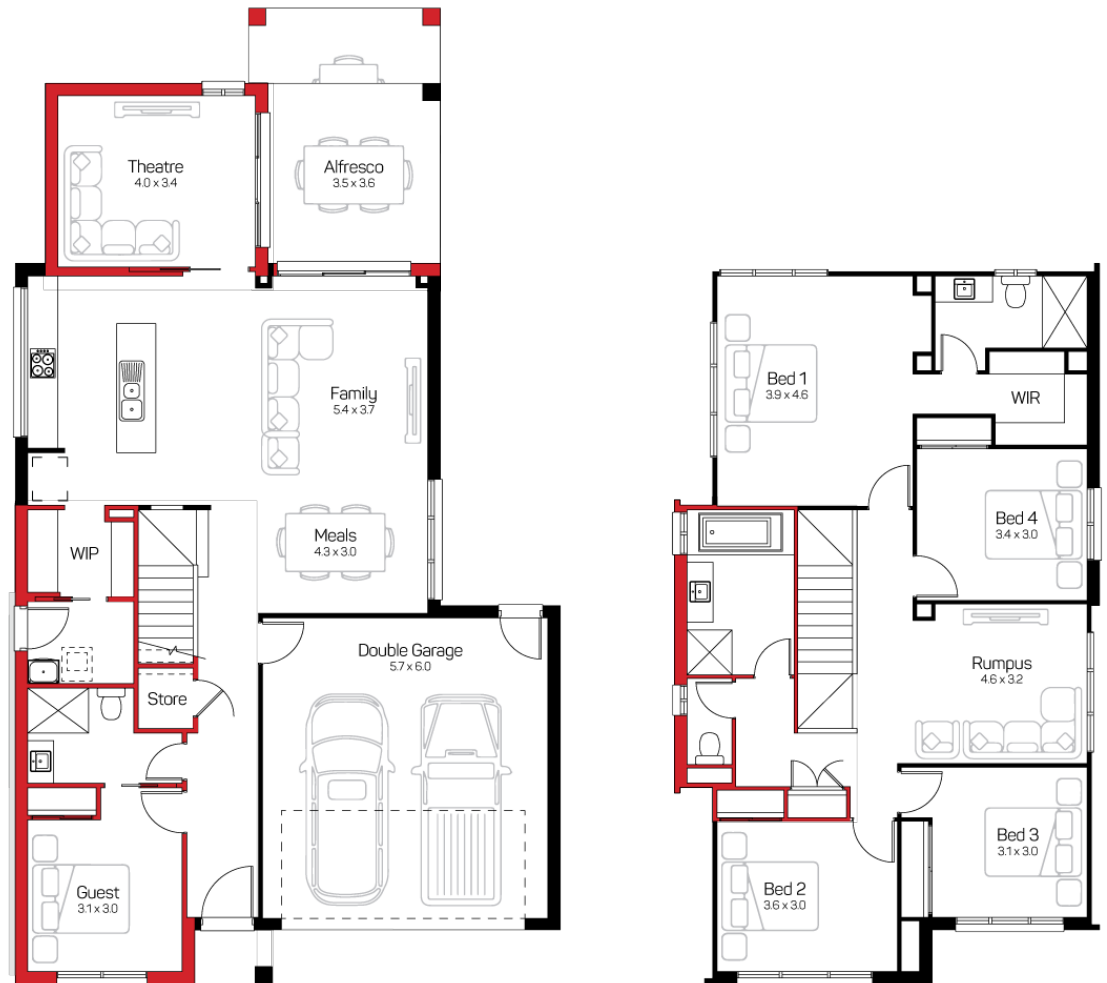
2

Width & Length

10.90 x 17.99m

Total Area

272.50m<sup>2</sup> / 29.33sq



13 64 69 or [Domainehomes.com.au](http://Domainehomes.com.au)

\*Facades are a style and are for illustrative purposes only and are not house specific. They may demonstrate optional enhancements such as Colorbond roof, rendering and feature brickwork/tiles that are not standard but are available as an optional upgrade. Each facade may look slightly different from one house type to another and not all facades are available on every home. Items such as landscaping, water features and decking are not supplied by Clarendon Homes. Ask your New Home Consultant for full details on standard inclusions on the home and facade you have chosen. Standard facade pricing is based on face brick (and cladding to double storey homes) with roof tiles unless otherwise specified. E&OE. Clarendon Homes (Qld) Pty Ltd ABN 37 078 853 022. Licence Number 80444.

# Antigua 29

**Domaine**homes

## Facade Style



Traditional



Portofino



Zaria



Ava



**13 64 69** or [Domainehomes.com.au](https://www.Domainehomes.com.au)

\*Facades are a style and are for illustrative purposes only and are not house specific. They may demonstrate optional enhancements such as Colorbond roof, rendering and feature brickwork/tiles that are not standard but are available as an optional upgrade. Each facade may look slightly different from one house type to another and not all facades are available on every home. Items such as landscaping, water features and decking are not supplied by Clarendon Homes. Ask your New Home Consultant for full details on standard inclusions on the home and facade you have chosen. Standard facade pricing is based on face brick (and cladding to double storey homes) with roof tiles unless otherwise specified. E&OE. Clarendon Homes (Qld) Pty Ltd ABN 37 078 853 022 Licence Number 80444.