

First home buyers stop renting!
HOME + LAND

Domainehomes

By ClarendonHomes



Rochedale

Lot 22 Premier Street, Rochedale

OWN A NEW
HOME FROM

PER WEEK[^]

FIXED PRICE HOME AND LAND **\$1,135,000***

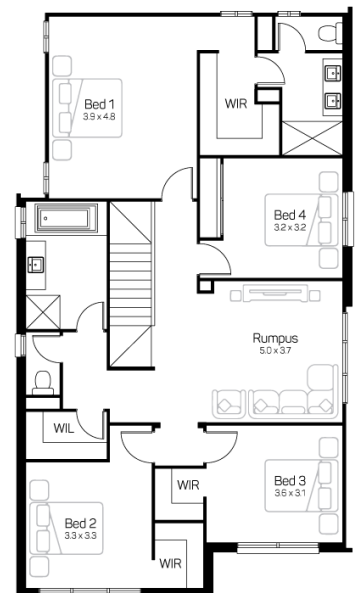
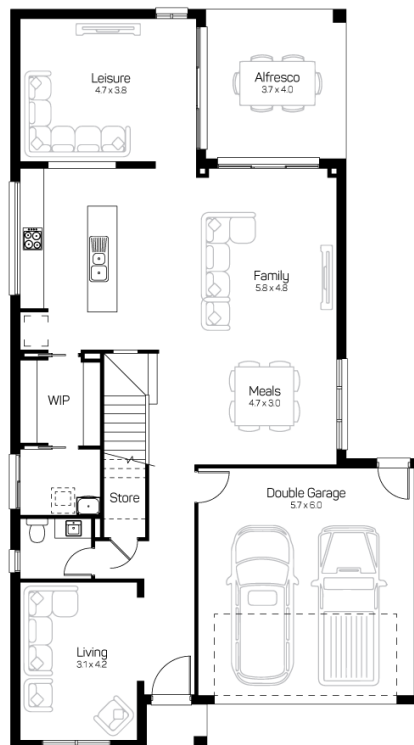
Antigua 33 | Ava

Home Size: 309.50m² Land Size 458.00m²



TURN-KEY PACKAGE DESIGNER UPGRADES INCLUDED

- Stone kitchen benchtops
- 900mm European appliances
- Overhead kitchen cupboards
- Feature front door
- Designer shower rails
- Carpet and tiling
- Driveway and letterbox
- Integrated alfresco slab
- Flyscreens
- Lifetime structural guarantee
- Fixed price site works
- And much, much more...



For more information contact **Andy Singh 0481 135 052** | asingh@domainehomes.com.au | **13 64 69**

*Facade image may depict features not included in the package price shown such as render, tiling, lighting, roof covering, timber decking and landscaping. Plans are subject to approval by the Principal Developer and Local Authorities. Domaine Homes QLD reserves the right to withdraw or alter this package at any time without notice. Fixed Price Site works included on Preferred estates. 10K allowance for site costs on non preferred.